

MORROW RE:PORT

A Newsletter from the Port of Morrow

VOLUME 20, ISSUE 1

Spring/Summer 2006

Briefly....

Looking for a place for your wedding or reception? There are still a few weekends available for the summer. Call Elaine @481-7678 for more information.

Inside...

Speedway Activity District
Q & A

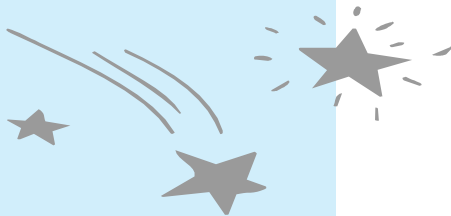
REMINDER!

Regular Port Commission Meetings are held on the second Wednesday of each month at the Riverfront Center @ 1:30 p.m.

Your visits and comments are welcome.

The meeting location is accessible to persons with disabilities. A request for an interpreter for the hearing impaired or for other accommodations for persons with disabilities should be made at least 48 hours before the meeting to Carmen Velasco, (541) 481-7678.

Check Us Out!



Greg Walden visits Port of Morrow Rail Spur



Larry Lindsay, Marv Padberg, Joe Taylor, Congressman Walden, and Don Russell

U. S. Congressman Greg Walden was working his way through Eastern Oregon on a tour earlier this month. He made a stop at the Port of Morrow on April 10th for a visit with Port of Morrow Commissioners. Later in the morning Congressman Walden toured the Port's Industrial Park to get an update on new developments. He also took a look at installation progress on the Port's new 18,000 foot rail spur.

The rail spur will be completed in July of 2006. The \$3 million investment was funded in part by a federal Economic Development Administration grant of \$1.2 million and a State of Oregon grant of \$500,000. The Port of Morrow is responsible for the remaining \$1.3 million investment in the rail spur. Economic interest in the site is evident with the signing of letters of intent to lease five separate parcels of property. The Port is anxiously awaiting finalizing leases and projects starting construction.

www.portofmorrow.com

The Port of Morrow Website has been updated to include meeting minutes. We are also linked to several sites which will help companies looking to locate in our area. You can go to oregonprospector.com to see a few of the available sites that are located in the industrial area.



Morrow County Commissioners put Speedway Activity District Measure on May ballot

A motor speedway in Morrow County is a step closer to reality following action taken recently by Morrow County Commissioners. The Commissioners voted unanimously to put on the May 16th ballot a proposal that would create a Speedway Activity District and an 8 percent excise tax for goods and services sold only within the activity district boundaries. The Port of Morrow and Morrow County Commissioners have signed agreements with Oregon International Speedway (OIS) to bring a destination speedway development to Morrow County and Oregon.

What is the Speedway Activity District?

The Speedway Activity District is an area of about 35 square miles located west of Boardman near I-84 and the Tower Road exit.

What is the Speedway Activity District Excise Tax?

It is a user fee that is **only applicable WITHIN the Speedway Activity District**. The 8 percent tax would apply to ticket sales and certain retail goods and services sold **ONLY** within the Speedway Activity District. Currently there are no retail businesses or taxable business operations located within the proposed activity district. All agricultural activities are excluded from the excise tax. People would pay the tax if they attended speedway events, purchased certain retail goods and services within the boundaries of the district or established a new business within the boundaries of the district. Any change related to the Excise Tax or the Speedway Activity District boundaries requires Morrow County voter approval. The tax will sunset in 30 years.

How will the excise tax be used?

The tax proceeds will be used to pay for roads, utilities, other infrastructure improvements and by Morrow County to pay for the costs of administering the tax.

Will Morrow County taxpayers be responsible for any of the speedway construction costs?

NO. All speedway construction costs are the responsibility of Oregon International Speedway. OIS will fund the project with private funds and/or public purpose tax exempt bonds. All funding, including public purpose tax exempt bonds will be guaranteed and repaid by OIS.

Why would a Speedway locate in Morrow County?

Location – Centrally located in the Pacific Northwest with 26 million people within a 600 mile radius of the site.

Climate – 300 Days of Sunshine! Low rain fall. Mild climate.

Access – Served by I-84 and I-82

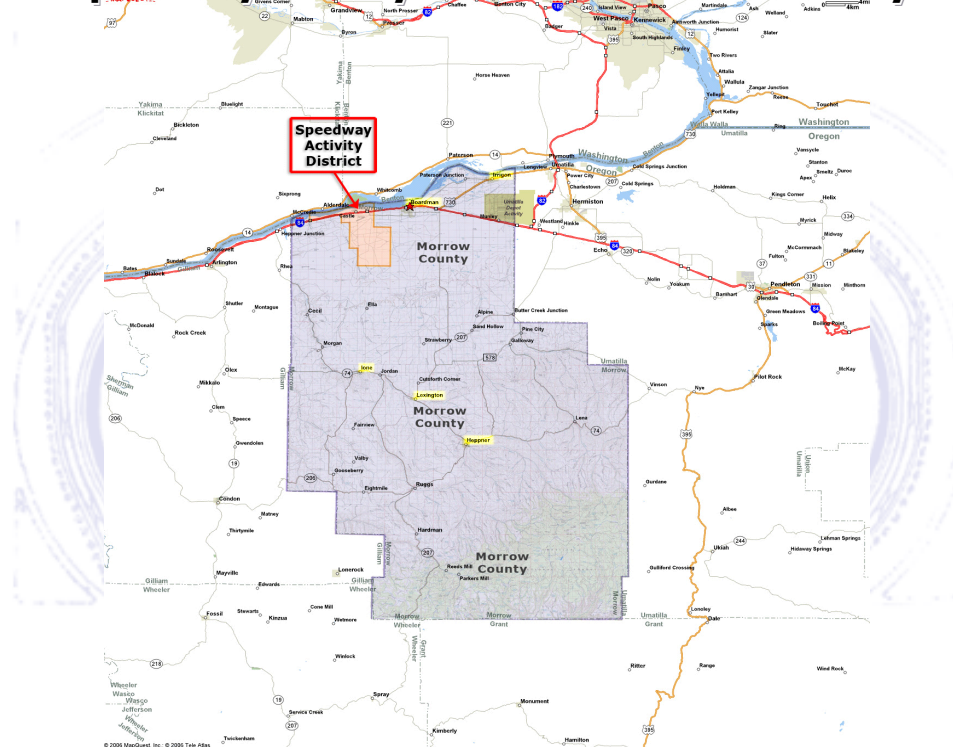
How will the Speedway impact employment in Morrow County?

It is presently estimated that the Speedway will create **100-200** full-time family-wage jobs during the Speedway's Phase I and **750** construction jobs for 3 years during the Speedway's Phase 1 construction.



Oregon International Speedway

Speedway Activity District in Morrow County



Who is Oregon International Speedway?

Oregon International Speedway is a group of motor sports industry investors led by Bill Gardner, former NASCAR Champion Cup team owner of DiGard Racing.

What will Oregon International Speedway include?

The Speedway will be a motor sports complex designed to accommodate a wide variety of sanctioned and club motor sports events.

Phase I of the Speedway will include:

- 1.2 mile high banked speedway with an 81,500-seat grandstand
- 5/8 mile paved oval and 3/8 mile dirt race track
- 2 ½ plus mile road course
- ¼ mile drag strip
- Go Kart track
- Motorsports Country Club
- Motorhome Village and campground
- Space for retail stores and restaurants
- Utilities, infrastructure and road development

How much will the speedway be used?

Projected use of the speedway during Phase I is approximately 200 days a year.

When will the Speedway be completed?

Construction of the speedway's Phase I is planned for completion in late 2008/2009.

Major Motor Speedway in Oregon

The Port of Morrow has worked toward the development of a major speedway for the past 6 years. This development project, if successful in moving forward, will bring much needed diversity to our agricultural-based economy. The potential increase in our tax base will benefit public taxing districts to help them maintain those services. Service clubs, non-profit groups, youth organizations and more will have an opportunity to generate revenues to further those organization's goals.

Bottom line, the benefits this development will bring to the citizens of Morrow County will definitely enhance the public infrastructure we all want and need. The opportunity to attract additional business to Morrow County will be enhanced dramatically by this facility as corporations attend events in Morrow County. It will also bring individual choices for jobs, additional activities and entertainment for everyone.

Please don't forget to vote!

Gary Neal, General Manager

POM
PORT OF MORROW
P.O Box 200 2 Marine Drive
Boardman, OR 97818
(541)481-PORT Fax (541) 481-2679
port@portofmorrow.com

PORT COMMISSIONERS:

Marv Padberg, President
Jerry Healy, Vice-President/Treasurer
Larry Lindsay, Secretary
Don Russell, Commissioner
Joe Taylor, Commissioner

MANAGER:

Gary D. Neal

EDITOR:

Elaine Vandecar



Around the Port

Carl Hearn, Plant Manager, reported that **Cascade Specialties, Inc.** is expanding its production capabilities with the addition of a second processing line. This addition will employ an additional 18 to 20 people. The expansion will increase their annual throughputs by 100% over the next 2-3 years.

Cascade Specialties was incorporated in 1998 and began operations in Morrow County in the 1994 crop year.

Morrow Cold Storage is adding 75,000 square feet to the southwest corner of the existing warehouse. Upon completion, the frozen storage capacity will be approximately 120 million pounds with over 300,000 square feet and 8,400,000 cubic feet of zero degree warehouse space. Expected completion date is set for October 1st. Increased volumes should result in the need for additional employees.

The warehouse opened in 1998 with offices and packaging facility complete in June of 1999. They expanded in 2000 adding 75,400 square feet.

Presorted
Standard
Permit No.11
Boardman, OR

**MORROW COUNTY
RESIDENT**